

SALE PRICE: \$2.28/SF | 18+/- ACRES

DEMOGRAPHICS

	1 mile	3 miles	5 miles
Estimated Population	4,061	11,092	13,464
Avg. Household Income	\$87,374	\$100,790	\$104,805

- Interstate 49 visibility
- Zoned Commercial
- Hotel, retail, restaurants
- Harrisonville continues to grow with many projects forthcoming
- Multifamily opportunity
- [Harrisonville Comprehensive Plan](#)



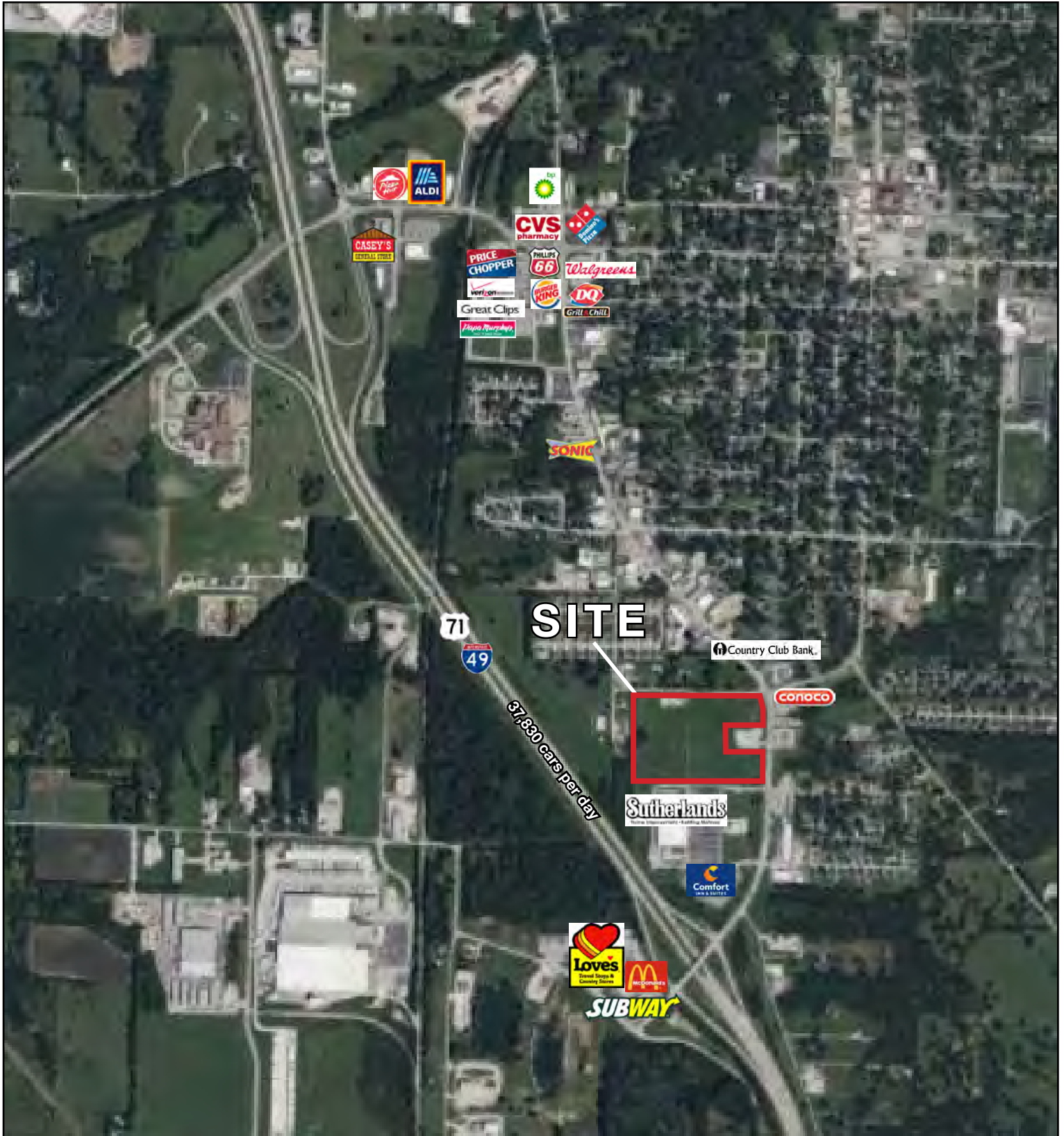
CLICK HERE TO VIEW MORE LISTING INFORMATION

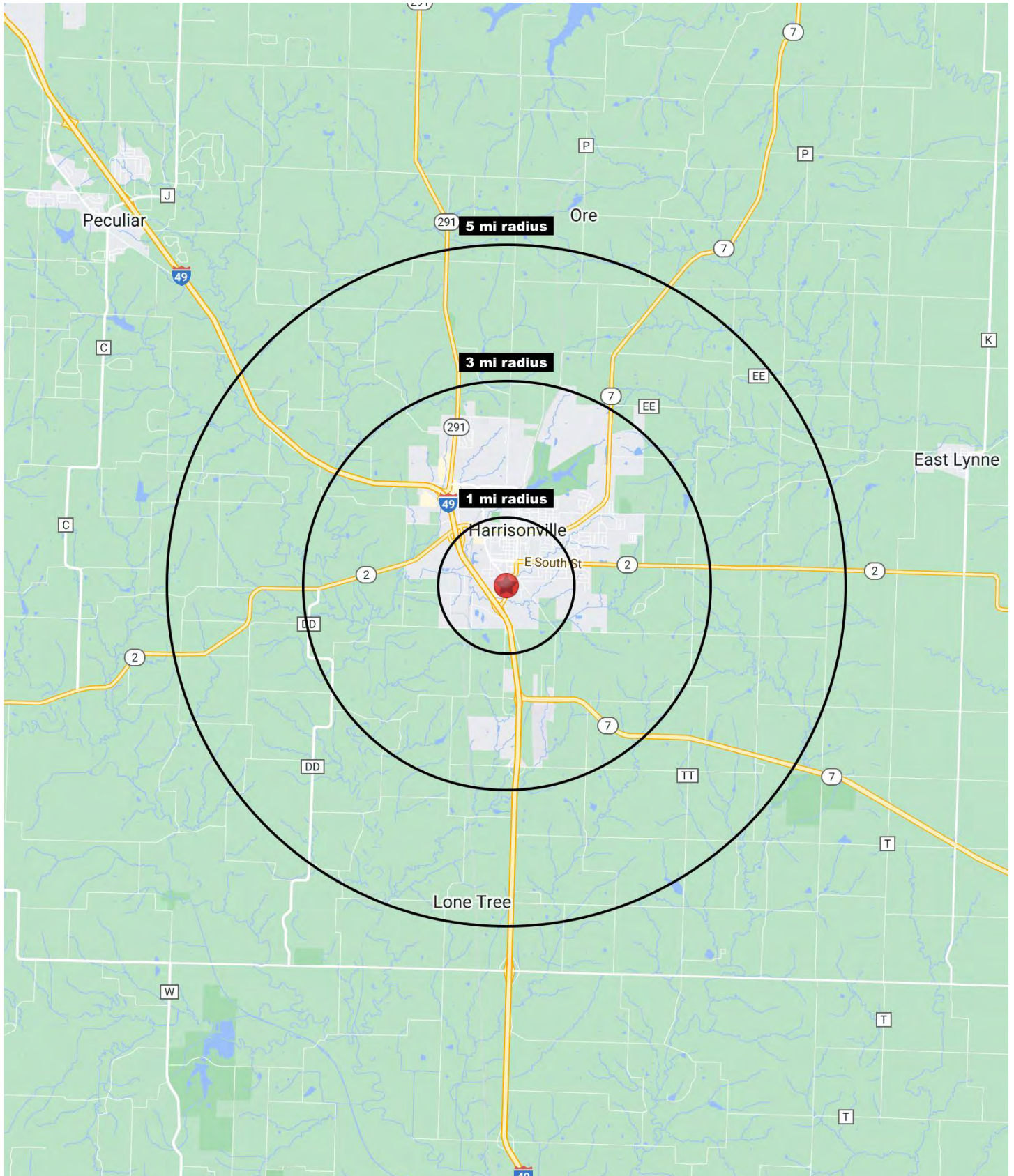
For More Information Contact:

BILL MAAS, CCIM | 816.412.7392 | bmaas@blockandco.com

Exclusive Agent

AERIAL







HARRISONVILLE COMMERCIAL LAND

1804-2004 S. Commercial Street, Harrisonville, MO

1804-2004 S. Commercial Street Harrisonville, MO 64701	1 mi radius	3 mi radius	5 mi radius
Population			
2023 Estimated Population	4,061	11,092	13,464
2028 Projected Population	3,791	10,578	13,119
2020 Census Population	4,042	11,247	13,646
2010 Census Population	4,035	11,094	13,450
Projected Annual Growth 2023 to 2028	-1.3%	-0.9%	-0.5%
Historical Annual Growth 2010 to 2023	-	-	-
2023 Median Age	34.3	38.9	40.4
Households			
2023 Estimated Households	1,514	4,261	5,249
2028 Projected Households	1,390	4,004	5,047
2020 Census Households	1,549	4,353	5,269
2010 Census Households	1,523	4,239	5,118
Projected Annual Growth 2023 to 2028	-1.6%	-1.2%	-0.8%
Historical Annual Growth 2010 to 2023	-	-	0.2%
Race and Ethnicity			
2023 Estimated White	89.7%	91.8%	92.2%
2023 Estimated Black or African American	3.7%	2.4%	2.2%
2023 Estimated Asian or Pacific Islander	0.9%	0.8%	0.8%
2023 Estimated American Indian or Native Alaskan	0.4%	0.3%	0.3%
2023 Estimated Other Races	5.3%	4.7%	4.5%
2023 Estimated Hispanic	3.8%	3.5%	3.3%
Income			
2023 Estimated Average Household Income	\$87,374	\$100,790	\$104,805
2023 Estimated Median Household Income	\$69,342	\$71,169	\$74,897
2023 Estimated Per Capita Income	\$32,983	\$38,988	\$41,096
Education (Age 25+)			
2023 Estimated Elementary (Grade Level 0 to 8)	1.5%	2.4%	2.5%
2023 Estimated Some High School (Grade Level 9 to 11)	5.7%	7.9%	7.3%
2023 Estimated High School Graduate	45.9%	38.0%	36.7%
2023 Estimated Some College	21.6%	23.9%	24.3%
2023 Estimated Associates Degree Only	7.8%	8.1%	8.9%
2023 Estimated Bachelors Degree Only	12.0%	12.9%	13.4%
2023 Estimated Graduate Degree	5.4%	6.8%	6.9%
Business			
2023 Estimated Total Businesses	308	631	730
2023 Estimated Total Employees	1,657	4,930	6,257
2023 Estimated Employee Population per Business	5.4	7.8	8.6
2023 Estimated Residential Population per Business	13.2	17.6	18.5

©2024, Sites USA, Chandler, Arizona, 480-491-1112 Demographic Source: Applied Geographic Solutions 11/2023, TIGER Geography - RS1

